



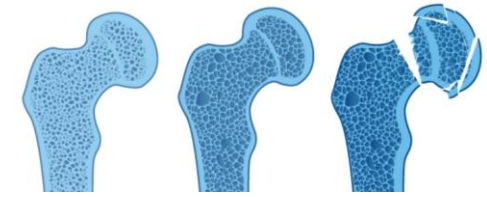
BROKEN BONES, BROKEN LIVES:

The fragility fracture crisis in the UK

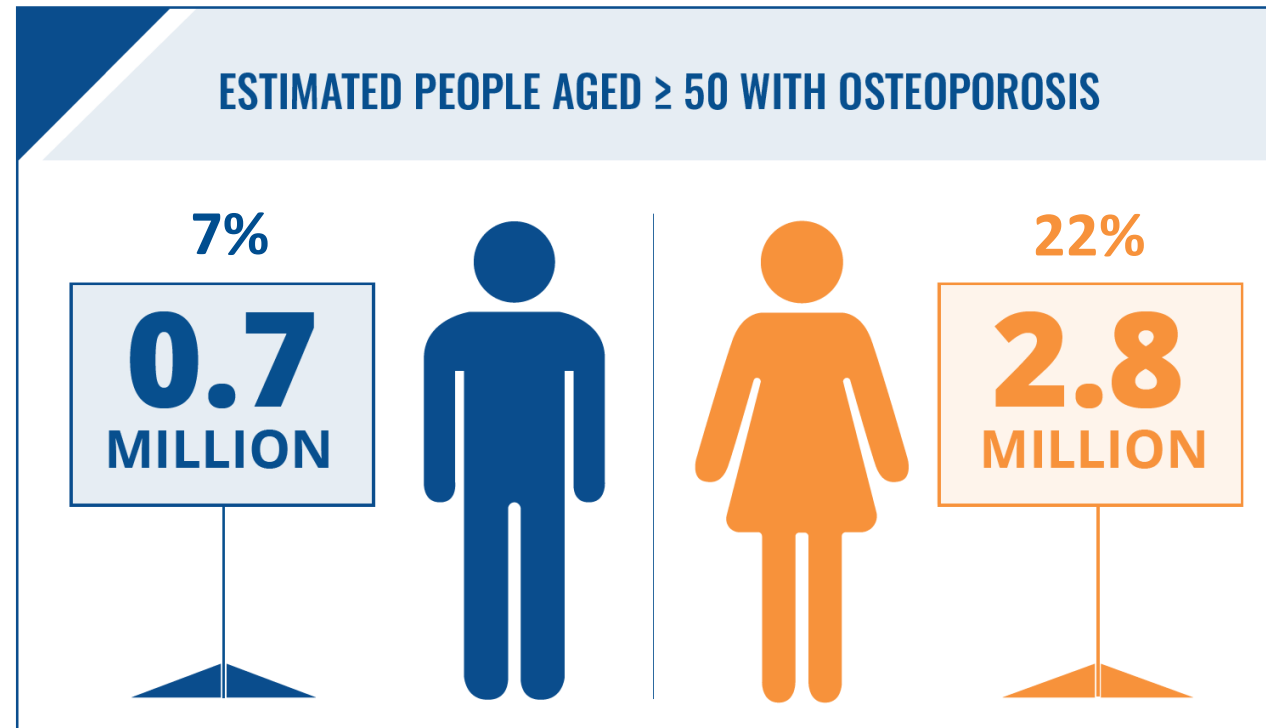


The development of this initiative has been supported by UCB.

OSTEOPOROSIS



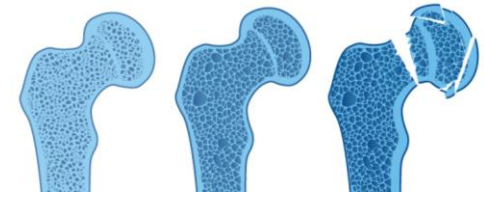
- Prevalence:**
- approximately 3.5 million people have osteoporosis in the UK (2015)
 - comparable to the other EU6* nations



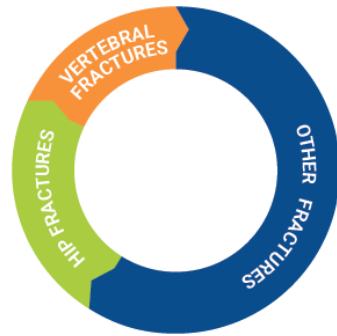
OSTEOPOROSIS



FRAGILE BONES THAT **FRACTURE EASILY**



TOTAL NUMBER OF FRAGILITY FRACTURES PER YEAR



520.000

of which 50% were MOFs*

	HIP FRACTURES	19%
	VERTEBRAL FRACTURES	16%
	OTHER FRACTURES	65%

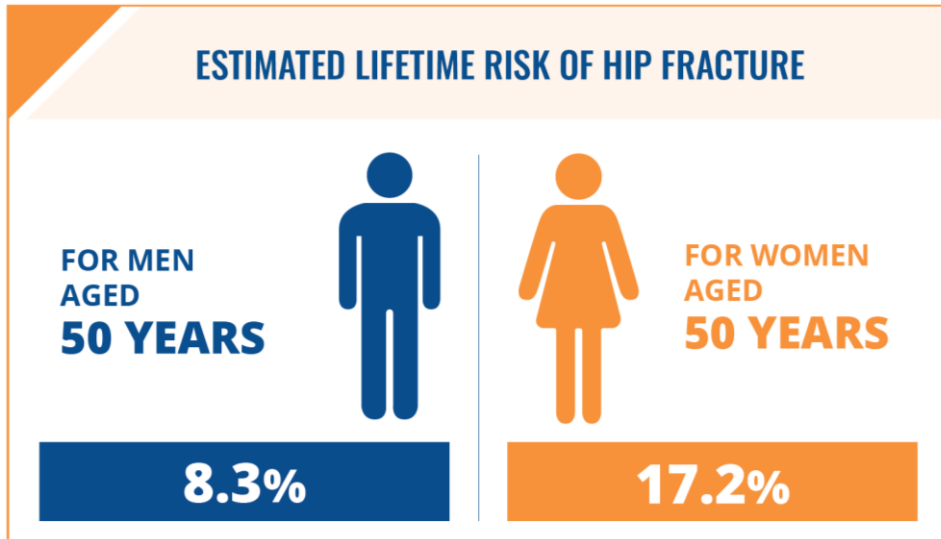
* Major Osteoporotic Fractures

Fragility fractures due to osteoporosis affect both men and women

Incidence in the UK:
Estimated number of fragility fractures in 2017, and by fracture category



FRAGILITY FRACTURES IN THE CONTEXT OF PUBLIC HEALTH PRIORITIES

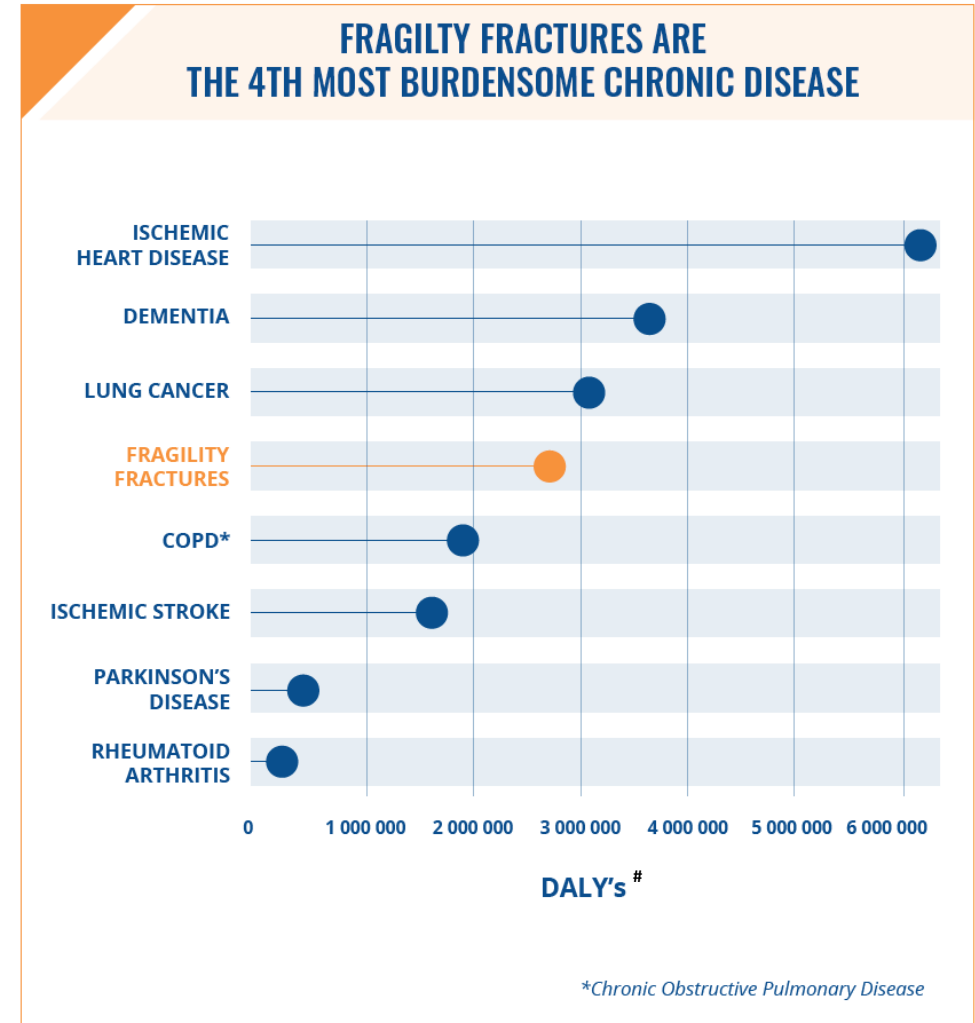
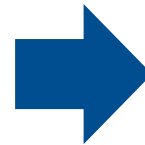


MOF = 17%⁺
STROKE = 14%⁺

MOF = 35%⁺
STROKE = 20%⁺

Lifetime risk of sustaining a MOF is markedly higher than the lifetime risk of having a stroke for both women and men⁺

⁺ MOF (Major Osteoporotic Fracture) risk for individuals aged 50 in the UK; equivalent stroke risk in Europe



[#] Disability-adjusted life years: a measure of the impact of a disease or injury in terms of healthy years lost



FRAGILITY FRACTURES INCUR SUBSTANTIAL HEALTHCARE COSTS

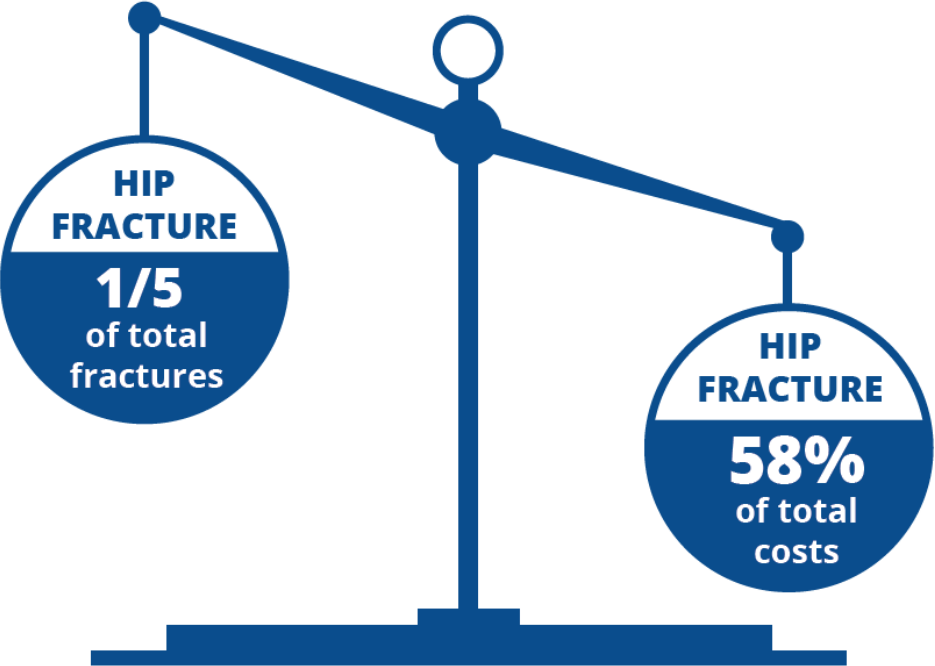
Fracture-related costs:

1st
YEAR

Happen **during first year** after fracture

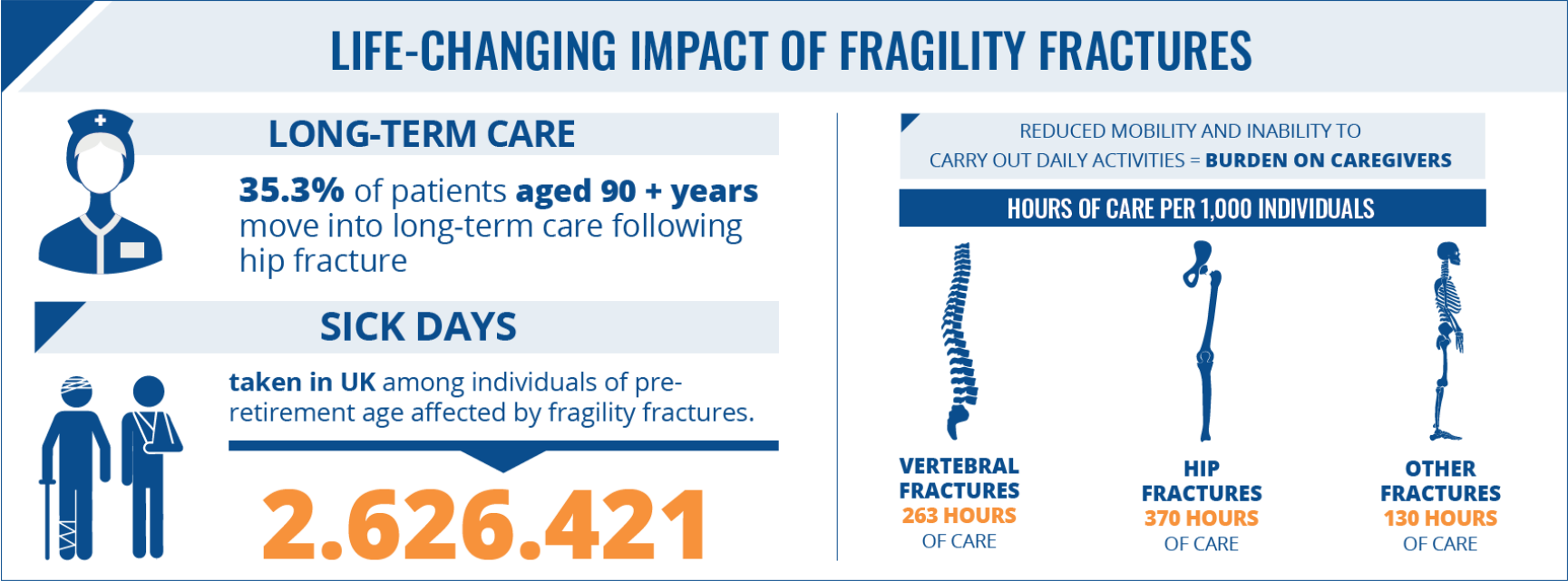


Highest with **hip fractures**



FRAGILITY FRACTURES HAVE A MULTIFACETED IMPACT ON THE INDIVIDUAL AND SOCIETY

Reduced independence and lifestyle impairment:
estimated 12% of patients discharged to long-term care after a hip fracture



Patients suffering fragility fractures depend on care from family and friends:

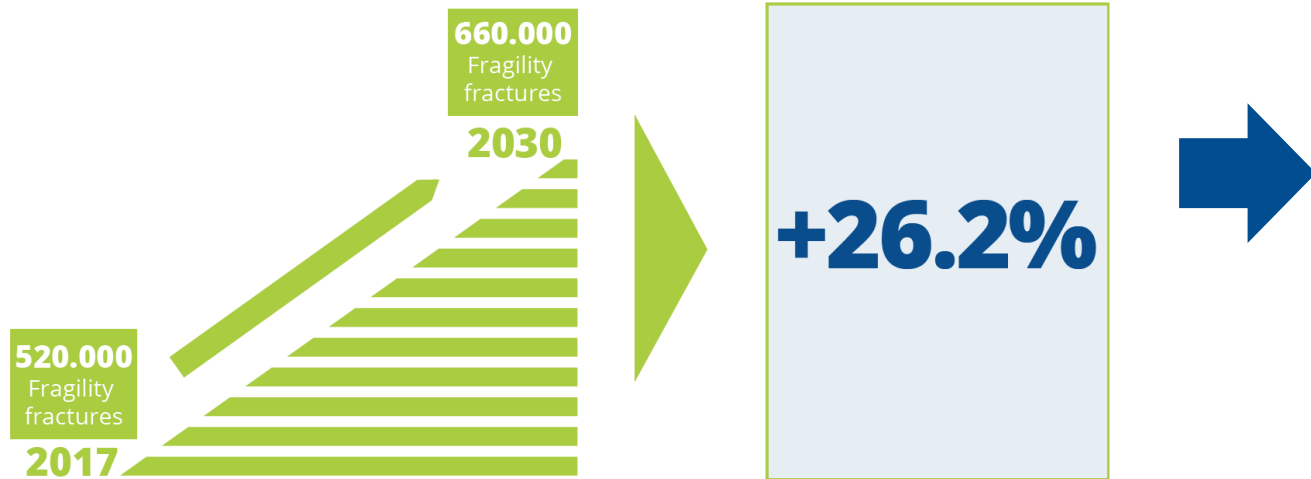
The UK has one of the lowest caregiver burdens of all EU6 nations with an average of 248 hours a year, per 1000 individuals

Fragility fractures can significantly impact the working population:
estimated 20% of fractures occur at pre-retirement age

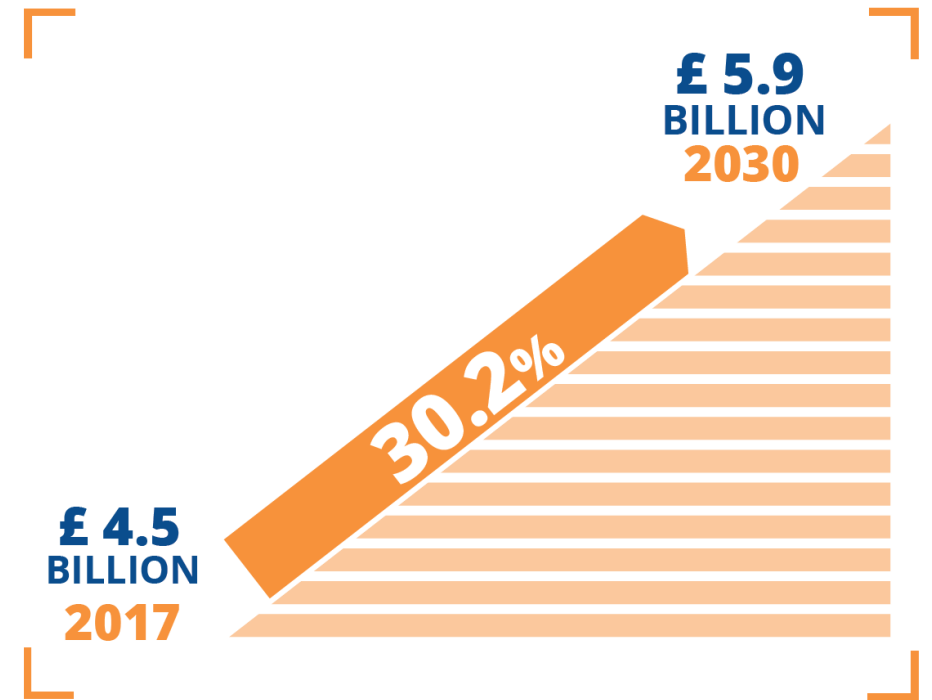


FRAGILITY FRACTURES ARE A GROWING CHALLENGE IN THE PUBLIC HEALTH LANDSCAPE

The incidence of fragility fractures is set to rise



Fracture-related costs are set to rise



EFFECTIVE MANAGEMENT IMPROVES OUTCOMES AND REDUCES COSTS

One fragility fracture leads to another:

Women who have had a fragility fracture are

five times more likely to experience a second fracture

within the first year after a fracture than women who have not had a prior fracture,

yet...



MASSIVE TREATMENT GAP

49%

OF WOMEN **DO NOT RECEIVE TREATMENT** FOLLOWING A FRACTURE

With appropriate medical treatment, many fragility fractures can be avoided



EFFECTIVE MANAGEMENT IMPROVES OUTCOMES AND REDUCES COSTS

Coordinated care models are multidisciplinary

healthcare delivery models which aim to identify, diagnose, and treat patients who have suffered a fragility fracture

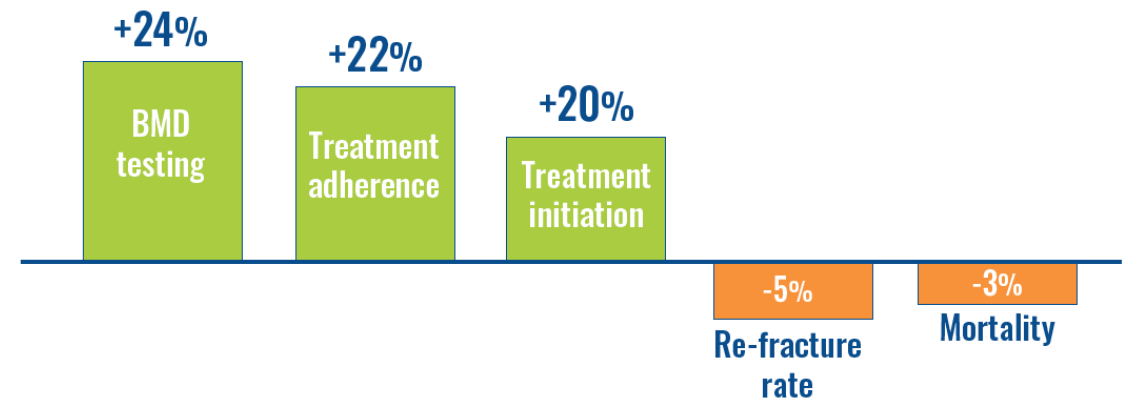
Multidisciplinary models

for secondary fracture prevention can contribute to closing the treatment gap

FRACTURE LIAISON SERVICES (FLS)

= cost-effective care delivery model to **IMPROVE OVERALL OUTCOMES & REDUCE COSTS**

EFFECTS of FLS (absolute change)



A ROADMAP TO SOLVE THE FRAGILITY FRACTURE CRISIS IN THE UK

The NOS and the osteoporosis community acknowledges that due to the devolution of powers to Scotland, Wales and Northern Ireland legislatures and administrations there is national variation



This policy roadmap is aimed at all stakeholders, and in fact to any innovators who are bold, brave and curious to want to make a difference to the lives of people with osteoporosis and the improvement of bone health in the UK

Roadmap centred around three main points:

- 1. Strengthen national policy**
- 2. Improve local services**
- 3. Raise awareness – change behaviour**





Broken bones, broken lives:
The fragility fracture
crisis in the UK



FOR MORE INFORMATION

www.iofbonehealth.org/broken-bones-broken-lives